



Belvac Production Machinery Technical Bulletin

Information for Customers Operating & Maintaining Belvac Machines

ISSUE 03 VOL. 7 MAY 2004

CC92/CC93 RL/CL Trimmers Trimmer Sliding Base Upgrade

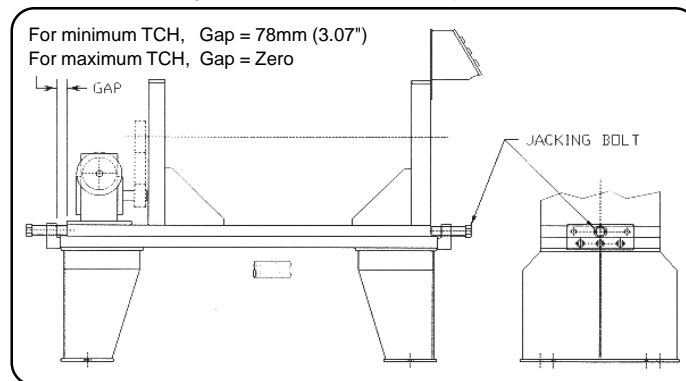
THIS BULLETIN SUPERCEDES ISSUE 06 VOL. 4 DATED OCTOBER 2001.

Since their introduction in the late 1970s, Belvac trimmers have been known for their robustness, precision quality, and superior performance. Through valued feedback from our customers, we continue to enhance performance and efficiency of these machines in the production environment. One such feedback concerned the excessive time involved to realign the crossover conveyor during a can height conversion.

Belvac trimmers were designed with the trimmed edge as the machine datum plane, whereas bodymakers use the dome end of the can as the datum surface. When a height conversion takes place, this mismatch of datum surfaces presents a time-consuming problem for crossover conveyance realignment. For example, a conversion from 33 cl to 50 cl typically requires an increase of 53 mm (2.08") in the track width. At the bodymaker, the conveyor is extended toward the open end of the can, whereas the trimmer requires a shift toward the dome end, both resulting in a skewed setup to be tweaked for functionality.

Belvac offers a Sliding Base solution to this time-consuming problem. In effect, the conventional trimmer from the base plate up is mounted on top of a subplate. The subplate in turn mounts to existing base legs positioned relative to the bodymaker datum ensuring the maximum TCH differential (78 mm) is achieved. The anchored subplate is used to reposition the main trimmer back and forth via jacking bolts and guide rods on both ends of the machine. The trimmer is readily brought in line with the datum of the bodymaker, requiring no special treatment nor tweaking to the crossover conveyor. A longer, lower drip pan is provided to accommodate the upper base movement, effectively maintaining good housekeeping of bodymaker coolant drainage.

Changeover Time is Effectively Reduced!



The upgrade includes:

- Assembly drawings and rework drawings
- All component parts and required hardware (drills and taps supplied on non-domestic machines)

The sliding base option accommodates a change in TCH of up to 78 mm (3.07").

This option is offered as an upgrade to existing CC92/CC93 model R/RL/C/CL trimmers. Similarly it is available as an option on new trimmer machines. *Contact Belvac Sales for a quotation.*



All Belvac Technical Bulletins may be viewed on Belvac's web site, www.belvac.com.
237 Graves Mill Road, Lynchburg, Va. 24502 USA Tel. (434) 239-0358 Fax (434) 239-1964

info@belvac.com

<http://www.belvac.com>