



Belvac Production Machinery Technical Bulletin

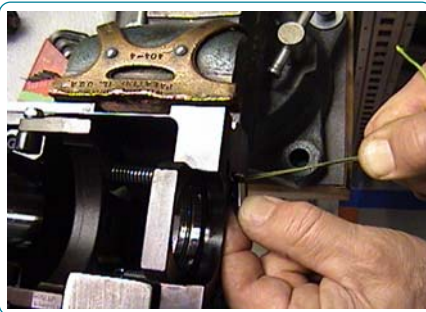
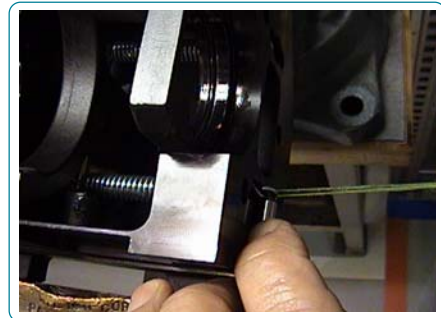
Information for Customers Operating & Maintaining Belvac Machines

ISSUE 5, VOLUME 12, APRIL 2009

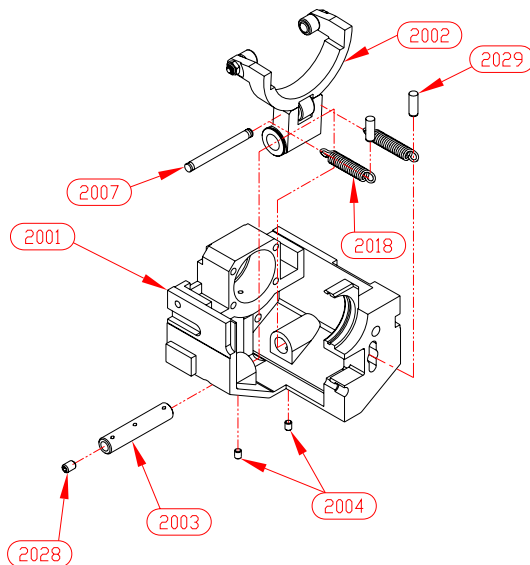
CC Series Trimmer: EMC Cartridge Spring Installation Procedure

During an EMC Cartridge rebuild, proper technique for the installation of the rocker arm return springs will ensure longevity of the springs themselves. This procedure is outlined in the EMC Manual Appendix Revision-7 and is provided as follows:

EMC spring (C42061) installation process: Move rocker arm #2002 forward and insert spring #2018 in thru the housing with spring hooked in the rear loop.



Move rocker arm #2002 rearward and hook the front loop of the spring #2018 to the crossbar #2007. Using the string, pull the spring #2018 thru the rear of the housing #2001 and install dowel pin #2029 and return spring and dowel pin into the recess in the rear of the housing.



Remove string.

Please contact Belvac Service with any questions.