



Belvac Production Machinery Technical Bulletin

Information for Customers Operating & Maintaining Belvac Machines

ISSUE 4, VOLUME 22, AUGUST 2019

Page | 1 of 1

BV86 MAIN ASSEMBLY DESIGN ENHANCEMENT

Belvac has supplied BV86 machines for many years. Included on this machine are side frames which hold bearings on the machine. These side frames have been redesigned to reduce the cycle time of the machine. The new design enhancement to the BV86 Coating Unit includes modifying the hole in the side frames to allow an off the shelf bearing to be used. This will decrease the lead time for BV86 machines by using more readily available components. Figures 1 and 2 reflect the changes made to the frames. Figure 3 shows how the frame and the bearings fit into the entire coating assembly.

The original side frame assemblies and bearings will still be available for spares, but customers who wish to convert to the new arrangement can do so. Belvac will implement this feature on new BV86 machines shipped in 2020 and beyond.



Figure 1: Existing Side Frame

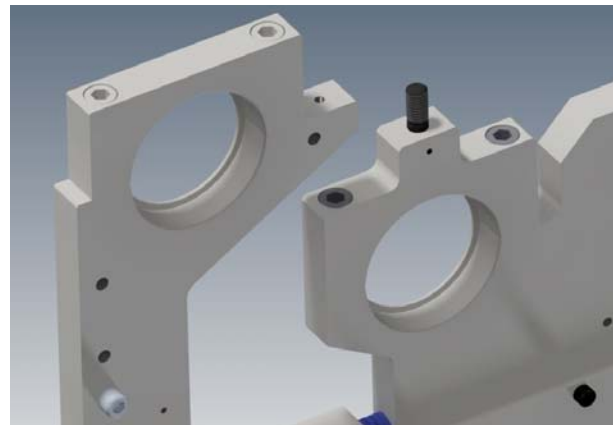


Figure 2: New Side Frame



Figure 3: New Side Frame with New Bearings